



A Diverse Energy Mix Powers Our Members

Linn County REC is dedicated to providing reliable, cost-effective, and sustainable electricity. We obtain 100% of our electric power from Central Iowa Power Cooperative (CIPCO), a generation and transmission cooperative.

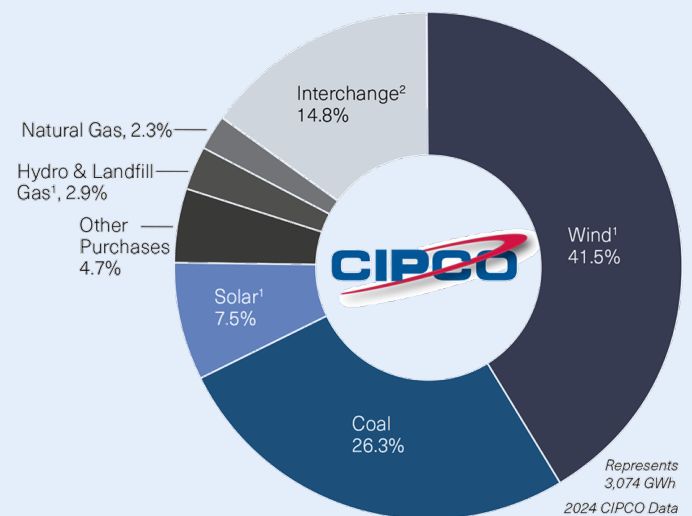
CIPCO meets our energy needs with a diverse fuel mix of coal, solar, hydro, landfill gas, wind, and natural gas energy resources. Fuel diversity is essential because no single energy source can always meet all our needs, as consumer demand changes based on time of day and temperature. A well-balanced mix ensures that Linn County REC members receive safe, reliable, and affordable electricity.

This fuel diversity benefits Linn County REC members in several ways:

- **Supports sustainability** by incorporating low-emission energy sources like wind and solar. These resources help reduce our environmental impact, but because they generate power intermittently, maintaining a diverse mix ensures reliability when the sun isn't shining or the wind isn't blowing.
- **Reduces regulatory risk** by limiting exposure to emissions-related regulations and avoiding costly abatements that could increase energy prices.
- **Boost's reliability** by ensuring power is available under a wide range of conditions, including during extreme weather events.
- **Additional revenue** is made by selling renewable energy certificates (RECs) associated with wind and solar resources instead of retiring the RECs. This results in additional revenue that contributes to lower energy costs, benefiting all members.

CIPCO is committed to investing in new technologies and renewable energy production, supporting the development of renewable energy resources in Iowa.

A DIVERSE BLEND OF ENERGY SOURCES



¹ CIPCO invests in the development of renewable energy projects in several ways. We operate six small-scale solar arrays near communities we serve and retain the renewable energy credits associated with each. We also contract with energy producers for the electricity output from wind, hydro, and methane gas from a landfill (converted into electricity). CIPCO cannot claim these resources as renewable within our supply portfolio as we have either sold to third parties or do not receive the renewable attributes associated with the electricity produced from these renewable power sources. By selling these attributes (RECs), we not only support other organizations in meeting their renewable energy goals, we also generate revenue to help us lower our wholesale power rate to our 12 Member-owner distribution cooperatives and 15 municipalities.

² A percentage of market purchases exist within the portfolio to meet additional supply needs not covered by existing contracts or CIPCO-produced generation. Weather volatility and unplanned operational events at power plants may also impact market purchases.



Sign Up For Outage Alerts

Stay informed about your power status with our outage alerts. We'll notify you if the power goes out at your home or business and when it comes back on. You can receive alerts by text or email.

Here's how to sign up:

1. Go to www.linncountyrec.com and click the "Report an outage" icon
2. Select "enroll here" under outage alerts
3. Enter your Linn County REC account number and cell phone number
4. You will then receive a code via text that you will need to enter
5. Follow the prompts until complete

Please note that your cell phone number must be linked to your Linn County REC account in order to enroll in outage alerts.

For more information about our outage resources, visit our website at www.linncountyrec.com.

May is National Electrical Safety Month

 plug into safety

Every day, we rely on electricity to power our homes and businesses. However, it is important to always be safe around electric appliances, equipment, and power lines. May is National Electrical Safety Month, and it's a great time to raise awareness on how to avoid potential electrical hazards. By taking simple precautions, everyone can avoid electrically related fires, fatalities, injuries, and property loss. Here are some safety tips:

INDOORS:

- Check electric cords for fraying or cracking. Replace damaged cords, and don't overload electric outlets.
- Remember extension cords are intended to be temporary; they are not intended as permanent household wiring.
- Don't run cords under carpets or rugs and don't tack or nail cords to walls or floors.
- Keep electric appliances and tools away from water. Never unplug an appliance that has fallen into water; instead, turn the power off at the breaker before you unplug the appliance or remove it from the water.
- Never put anything other than an electrical plug in an outlet. Use outlet covers or caps to protect children.
- Keep your home's electrical system in good repair. Contact a licensed electrical contractor if you have flickering lights, sparks, non-functioning outlets, or need wiring repairs or upgrades.

OUTDOORS:

- Never touch downed power lines! Always call us if you see lines down.
- Watch for overhead lines every time you use a ladder, work on roofs, trees, or carry long tools or loads. Keep kites, model airplanes, and metallic balloons away from power lines.
- Know what's below before you dig. At least 2 days before starting any digging or excavating project, call 811 to have underground utility lines marked for free.
- Avoid planting trees underneath power lines or near utility equipment.





Severe weather can occur suddenly during this time of year. In the event of a power outage, please contact Linn County REC. Every call helps us determine the location and extent of the outage, allowing us to prioritize restoration efforts. Follow these tips to stay safe before, during, and after a storm:

Before the storm

- Charge your cell phone and portable chargers.
- Sign up for local emergency alerts on your phone.
- Keep a flashlight, radio, and extra batteries available.
- Know where your main breaker disconnect is located.
- Unplug sensitive electrical equipment.

During the storm

- Unplug as many appliances as possible to prevent damage from potential power surges during restoration.
- If you are outside, do not touch or drive over any power lines. Always assume that a downed line is energized.

After the storm

- Once power is restored, plug in appliances one at a time.
- Immediately report any downed lines or damaged utility equipment to us, and keep others away from the area. Always treat downed lines as dangerous.
- Do not attempt to assist utility crews, as your efforts may hinder their restoration and safety efforts.

If you experience a power outage, report it to us by:

Phone: Call our toll-free outage number at 1-888-271-6250. Calls are answered 24/7.

SmartHub App: Download the FREE app in the App Store or Marketplace.

Text: Enroll on our website. Once enrolled, text "outage" to 55050 on your cell phone. We must have your cell phone number on file for this option.

Visit our Facebook page for outage updates. Visit our website for more outage resources, including our outage map with real-time outage information.

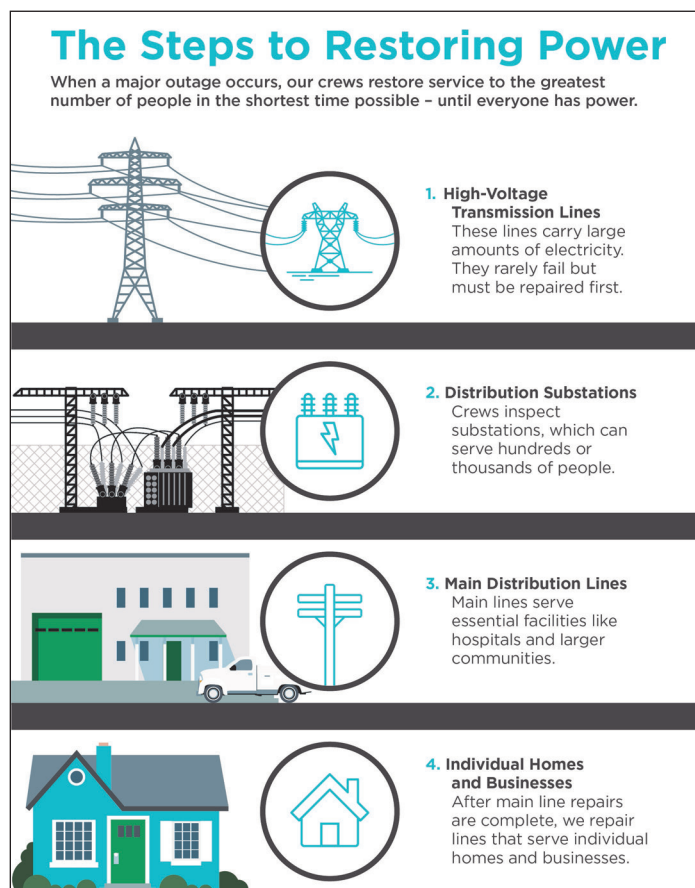
How Power Is Restored

When a severe storm affects our service area, our crews begin assessing the damage. Linn County REC then activates its power restoration plan, which is designed to restore electricity to the largest number of members in the shortest possible time. The severity of the outage and current weather conditions influence how long it takes to restore power.

Who Owns What

If a storm causes damage to electrical equipment on your property, you may have questions about repairs.

Linn County REC is responsible for repairing any equipment owned by the cooperative affected by the storm. However, if the damage is to equipment owned by a member, the member must handle the repairs. We recommend that members hire a licensed electrician for any repairs to member-owned equipment. For further clarification, we have guides available on our website to help you determine who owns what equipment.



Summer Office Hours

We will begin our summer hours on May 26
and continue until Friday, August 30.

Monday - Thursday, 7:00 am to 4:00 pm
Friday, 7:00 am to 11:00 am



SCHOLARSHIP WINNERS

Congratulations to this year's recipients.

Linn County REC is pleased to announce the recipients of our 2025 - 2026 college scholarships:

Ayumi Fottral, Swisher, will attend Iowa State University.

Rose McAtee, Solon, will attend Mt. Mercy University.

Julia Steinbrech, Solon, will attend Iowa State University.

Anna Buchholtz, Cedar Rapids, will attend the University of Iowa.

Mrudani Ramkumar, Coralville, will attend the University of Iowa.

Adam McCrea, Cedar Rapids, will attend Iowa State University.

Mya Gilchrist, Center Point, will attend Kirkwood.

Naomi Scott, Toddville, will attend Kirkwood.

Miken Wheeler, Anamosa, will enter the powerline program at Northwest Iowa Community College.

Corbin Sparrgrove, Parkersburg, will enter the powerline program at Northwest Iowa Community College.

Linn County REC has proudly awarded college scholarships to students in our service territory for over 27 years as a commitment to the communities we serve.



Sloppy Joe Sliders

Sliders:

- | | |
|-------------------------------|--------------------------|
| 1 dozen Hawaiian dinner rolls | 2 lb ground beef |
| 1 packet Sloppy Joe Seasoning | ¼ cup water |
| ¾ cup BBQ sauce | 1 (8oz) can tomato sauce |
| 8 slices American cheese | |

Glaze:

- | | |
|----------------------|-----------------------------|
| ½ cup butter | 2 Tbsp brown sugar |
| 1 Tbsp dijon mustard | 1 Tbsp Worcestershire sauce |
| 1½ tsp sesame seeds | |

Preheat oven to 350°F. In a large skillet, cook ground beef over medium-high heat until no longer pink. Drain excess grease. Add a packet of sloppy joe seasoning, tomato sauce, barbecue sauce, and water to the skillet. Bring to a boil and simmer over medium heat for 5 to 10 minutes. Without separating the rolls, cut the entire loaf horizontally and place the bottoms in a 9×13-inch baking dish. Spread sloppy joe mixture over the bottom buns. Top meat with cheese slices. Place top buns on top of the cheese. In a small saucepan combine butter, brown sugar, mustard, Worcestershire, and poppy seeds. Bring to a boil and pour over sandwiches. Bake for 20-30 minutes, or until the tops are brown and crispy.



MEMORIAL DAY REMEMBER AND HONOR

Our office will be closed on May 26
in observance of Memorial Day.

Bill payment kiosks are available
24/7 at our Marion office and North
Liberty operations center.

ElectricCONNECTION, the official publication of Linn County Rural Electric Cooperative,
is published monthly for members of Linn County Rural Electric Cooperative,
5695 REC Drive, P.O. Box 69, Marion, Iowa 52302. © Copyright 2025
This institution is an equal opportunity provider and employer.

