



System Upgrades To Serve You Better

Our line crews work on improvements and upgrades every year to enhance system reliability and prepare for future load growth. Linn County REC has a short—and long-term work plan that addresses anticipated or existing development and the replacement of older lines, equipment, or substations. In 2025, Linn County REC will complete approximately \$13 million in system improvements.

Line Projects

Overhead line projects will occur in North Liberty, Troy Mills, Walker, Sutliff, Tiffin, Oxford, and northwest Cedar Rapids. These scheduled projects are all line replacements due to age deterioration or to increase energy capacity.

New underground line projects are scheduled for North Liberty, West Branch, Tiffin, Marion, and southwest Cedar Rapids. All line projects are connected with current and future city, county, and Iowa DOT projects.

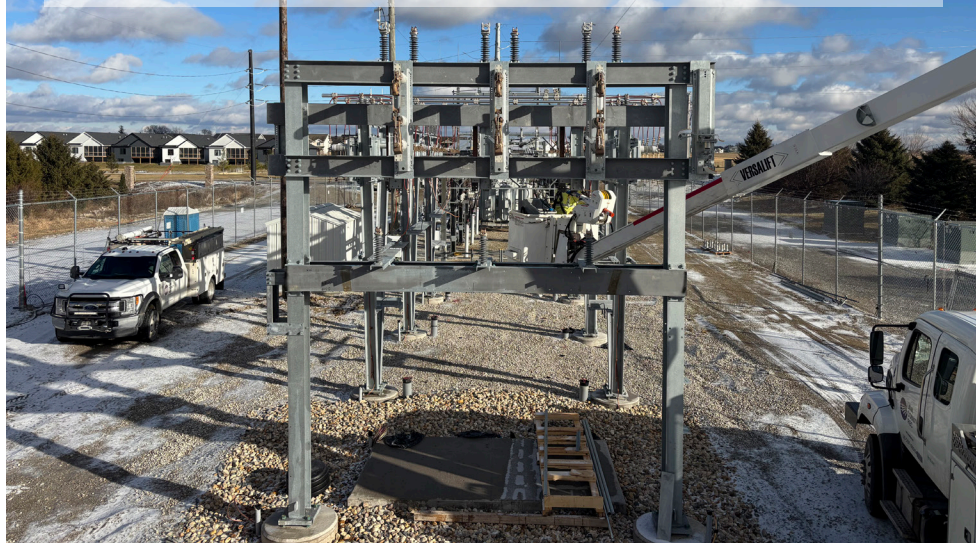
Substations

We are building a new substation in northeast Cedar Rapids and west of Tiffin. These substation projects address load growth and increase energy capacity.

Linn County REC can complete most construction projects without loss of power. However, if it is necessary to interrupt power during construction, the cooperative makes every effort to contact members who will experience an outage.

We have a short and long-term work plan to improve system reliability. In 2025, we will complete approximately \$13 million of system improvements.

Linn County REC is committed to providing our members with safe, reliable, cost effective, sustainable electricity and excellent member service.



Spring Into Energy Efficiency



Spring is almost here. It's the perfect time to start those outdoor projects and explore new ways to make your home more energy efficient.

- **Service your air conditioner.** Replacing air filters can lower your cooling system's energy consumption by up to 15%.
- **Open windows.** Opening windows creates a cross-wise breeze to cool your home naturally.
- **Use ceiling fans.** In the spring and summer, set ceiling fans counterclockwise to create a downward airflow that will make rooms feel cooler.
- **Install window treatments.** Blinds, shades, and films can slash heat gain when temperatures rise.
- **Caulk air leaks.** Using low-cost caulk to seal cracks in your home keeps warm air out.
- **Plant some shade.** Plant a shade tree along the south- or west-facing side of your home. Trees help shield your home from the sun in summer, keeping you cool and reducing your energy bill.



Know Your Energy Use with SmartHub

Did you know that you can view your energy usage from your desktop or mobile device? Through detailed graphs on our SmartHub app, you can monitor your daily consumption 24/7 and see how it is trending over time. You can even download your data into a spreadsheet file with the easy green button feature.

Download the SmartHub app for free! It's available in the Apple App Store or Google Play Marketplace - or by scanning the QR codes below.

Once downloaded, select Linn County REC as your electric provider. Next, enter your current username and password or create an account. To learn more about SmartHub, watch our introduction video at www.linncountyrec.com.



ANDROID



iOS

Manage Your Account With Convenient Billing Options

Linn County REC offers many convenient ways to receive and pay your bill. Visit www.linncountyrec.com for more information and to create an account.

Paperless Billing

Paperless billing eliminates your paper bill and newsletter. Instead, your bill statement and newsletter can be viewed online or printed at your convenience. It is safe and offers you the flexibility to manage your account online at any time from anywhere.

Budget Billing

Budget billing allows you to pay your bill in equal monthly installments, so you know how much to budget for your utility bills. Based on your usage history, monthly payments will equal 1/12 of your estimated annual billings.



AUTOPAY

Set up automatic payments from your bank or credit card account. Sign up at www.linncountyrec.com.



SMARTHUB

Pay anytime through our SmartHub app. Free online account access on your phone, tablet, or desktop.



ONE TIME PAYMENT

Make a payment using your bank or credit card. Call 1-877-999-9619



KIOSK (self service payment)

5695 REC Drive, Marion
835 W 240th Street NE, North Liberty



MoneyGram

Pay in cash using pin # 15106
Find locations at: www.moneygram/locations



Clearing The Path For Safety and Reliability

Overgrown trees and branches are one of the leading causes of power outages. To ensure safe and reliable service for all members, routine trimming of trees and other vegetation – such as vines, shrubs, and bushes – is necessary. There are several benefits to regular tree trimming, including:

RELIABILITY

Keeping power lines clear of overgrown vegetation improves service reliability. We've all seen severe weather events with fallen tree limbs taking down power lines and utility poles. While many factors can impact power disruptions, about half of all outages can be attributed to overgrown vegetation. Scheduled trimming throughout the year keeps lines clear from overgrown or dead limbs that are likely to fall, and we can better prepare for severe weather events.

SAFETY

Our primary concern is the safety of our workers and members. Any tree or branch that falls across a power line creates a potentially dangerous situation. A proactive approach lessens the chances of fallen trees during severe weather events, which makes it more complicated and dangerous for lineworkers to restore power.

AFFORDABILITY

As a co-op, we always strive to keep costs down for our members. If trees and other vegetation are left unchecked, they can become overgrown and expensive to correct. A strategic vegetation management program helps keep costs down for everyone.

WAYS TO HELP LIMIT TREE TRIMMING

By planting trees in the right place from the start based on their expected height, you can help reduce the need to trim trees near overhead power lines.

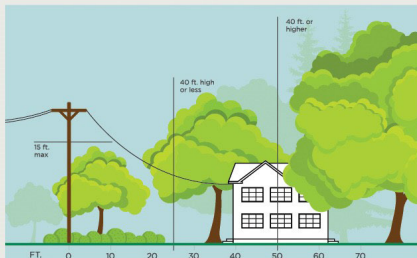
You can also practice safe planting near pad-mounted transformers. If you're planting shrubs, bushes, or other vegetation near transformers, remember to plant at least four feet away from the transformer sides and at least 10 feet from the transformer door.

If you spot an overgrown tree or branch that's close to power lines, let us know by emailing our Operations Department at lcrc@linncountyrec.com and filling out the tree permit form on our website at www.linncountyrec.com/forms/tree-permit.

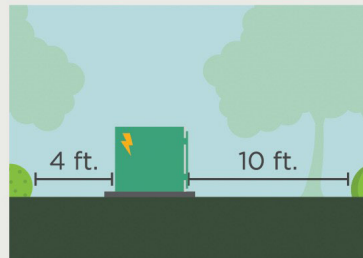
3 Ways to Help Limit Tree Trimming

Did you know electric utilities are required to trim trees and other types of vegetation that grow too close to overhead power lines? We know you love your trees, and we will do everything we can to avoid trimming them. Here's how you can help:

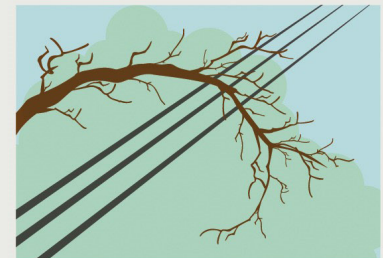
1. Plant trees in the right place. Trees that will be <40 ft. should be planted at least 25 ft. away from power lines (>40ft. should be at least 50 ft. away).



2. Don't block pad-mounted transformers. Plant shrubs at least 10 ft. away from transformer doors and 4 ft. from transformer sides.



3. Report dangerous branches. If you spot a tree or branch that is dangerously close to power lines, please let us know.



**Trimming improves safety for all.
Let's work together to enjoy the beauty of trees and reliable electricity.**



Help Shape Our Future, Serve On The Nominating Committee

Linn County REC is seeking members to serve on the nominating committee and qualified candidates to run for board positions in the 2025 election. If you are interested in representing your district on the nominating committee or reside in districts 1 or 5 and wish to run for a director position, please contact Robin at 319-377-1587. For more information, visit www.linncountyrec.com.



Move Farm Equipment Safely This Spring

As we approach the planting season, don't forget to plan for safety. Keep these safety tips in mind:

TRAIN OTHERS

Train anyone working on your farm, including family members and seasonal workers, about electrical hazards.

WAIT TO UNFOLD

Remind workers to fold or unfold extensions well into the field, not close to the field's edge where power lines are typically located.

USE A SPOTTER

When working near power lines, always have a spotter on the ground who can direct you away from power lines or poles if you are getting too close.

DO NOT EXIT YOUR CAB

If your machinery or truck makes contact with a power line, pole, or guy wire, you could become electricity's path to ground and become electrocuted if you step out of the cab.

CALL 9-1-1

Call 9-1-1 to have your electric utility dispatched to de-energize the power source. Only exit the cab if your equipment is on fire. If that happens, make a solid jump out and hop away with your feet together as far as you can.



Party Cheese Bread

1 round loaf sourdough bread (1 pound)
1 pound Monterey Jack cheese, sliced
1/2 cup butter, melted
2 tablespoons lemon juice
2 tablespoons Dijon mustard
1-1/2 teaspoons garlic powder
1/2 teaspoon onion powder
1/2 teaspoon celery salt
Minced fresh chives, optional



Preheat oven to 350°. Cut bread into 1-in. slices to within 1/2 in. of bottom of loaf. Repeat cuts in opposite direction. Insert cheese in cuts. Mix all remaining ingredients except chives; drizzle over bread. Wrap in foil; place on a baking sheet.

Bake 20 minutes. Unwrap; bake until cheese is melted, about 10 minutes longer. If desired, sprinkle with chives.

ElectricCONNECTION, the official publication of Linn County Rural Electric Cooperative, is published monthly for members of Linn County Rural Electric Cooperative, 5695 REC Drive, P.O. Box 69, Marion, Iowa 52302. © Copyright 2025
This institution is an equal opportunity provider and employer.

