



Linn County
Rural Electric
Cooperative

ElectricConnection

A monthly publication for our members



Follow us on Facebook

FEBRUARY 2024



READY TO SERVE YOUR CO-OP?

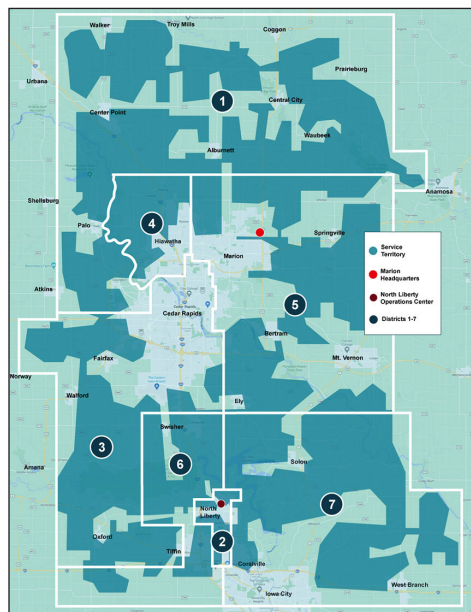
Linn County REC is seeking members to serve on the nominating committee and qualified candidates to run for board positions for the 2024 election.

The Linn County REC board of directors is looking for seven individuals, one from each voting district, to represent their district on the nominating committee. Districts 4 and 6 are up for election this year. Representatives from these two districts are responsible for finding members to run for election. However, the cooperative will also provide names it receives from members interested in running for the Board to committee members.

Nominating committee members meet once in June at our headquarters in Marion for a dinner meeting. During the meeting, district 4 and 6 members present candidates to be included on the election ballot. The meeting usually lasts about two hours. Members who have never served are preferred.

Director Elections

Our Board is a democratically elected body nominated by its members and voted into position by members participating in the cooperative's election in September. Their primary duties are establishing rules, regulations, and policies that guide the cooperative's operations. In addition, they represent their members' best interests when making important decisions.



All members are encouraged to run for the Board. Director qualifications, responsibilities, and time commitment are available on our website.

If you want to represent your district on the nominating committee or live in districts 4 or 6 and wish to run for director, please contact Robin at 319-377-1587.

HOW THE ELECTRIC CO-OP WORKS



1. Member-owners elect board directors.

2. Board defines expectations for the co-op's general manager/CEO and provides policies & strategic goals.



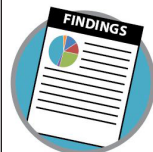
3. GM/CEO interprets the board's expectations to create a plan.

4. GM/CEO delegates responsibilities to staff who help carry out the plan.



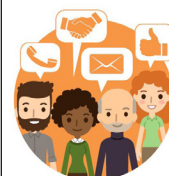
5. Staff develop and oversee programs to accomplish their tasks.

6. GM/CEO collects data from staff about their efforts.



7. GM/CEO shares results with the board.

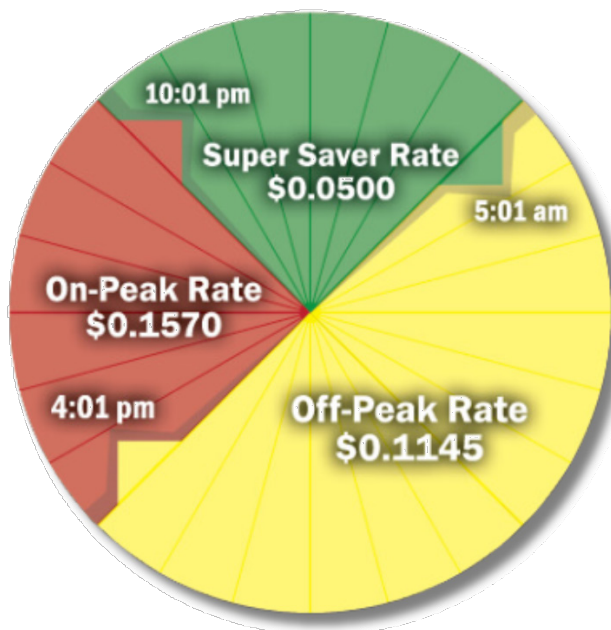
8. Board reflects on policies and updates them as needed.



9. Member-owners provide input and feedback to the board, GM/CEO and staff.

Shift Usage Outside of Peak Times and Save!

Using the time-of-day rate to your advantage can lead to savings on your energy bill. You can save each month when you shift electric use away from on-peak times. Energy saved during the peak period translates into lower power costs for Linn County REC and our members.



How to save on time-of-day:

- Postpone the use of major appliances. Move laundry loads to off-peak hours. Run the dishwasher right before bed, or use the delay cycle.
- If you have a programmable thermostat, adjust the settings to sync up with off-peak rate periods.
- Unplug charging cables and small appliances when not in use. Plug larger items like TVs into a power strip that can be flipped on and off.
- If you have an electric vehicle, charge it overnight.
- Use smart plugs/automatic timers to run appliances and equipment such as dehumidifiers, EV chargers, and pools/hot tubs.

For more tips and information on the time-of-day rate, visit www.linncountyrec.com.

Have An Electric Space Heating System? Take Advantage Of Our Heat Plus Rate

Winter's in full swing and we will all use heat to keep our homes comfortable. For members who have electric heating, Linn County REC offers a discounted rate to help reduce your heating costs.

Heat Plus is an optional rate offered to residential and small business members who use electricity as their primary heat source. A separate approved (Heat Plus) meter measures only the electric space heating kilowatt-hours (kWh). During the heating season (October – May billing months), the Heat Plus meter is subtracted from the general use meter and charged at \$0.0617/kWh. Therefore, you have two electric meters.

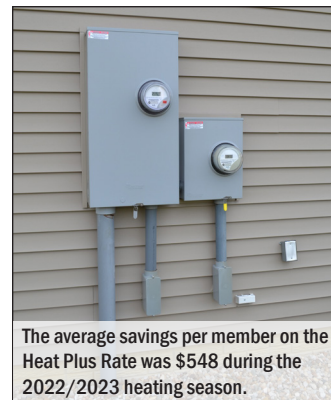
Requirements to be eligible for the Heat Plus Rate include having electric heat (Ground-Source Heat Pumps, Air-Source Heat Pumps, electric baseboard, electric furnace, electric boiler, ceiling cable, cove, and electric water heaters) used for space heating only. Your domestic water heater must be electric and is not eligible to be installed in the Heat Plus Panel.

It is important to remember that for members to be eligible to stay on the Heat Plus Rate, they must continue to have electric space heating and an electric water heater(s), and the Heat Plus Meter must stay energized year-round. Members must contact Linn County REC if this changes.

Prior to Heat Plus meter connection, members must:

- **Submit application**
- **Have installed meter socket/equipment inspected**

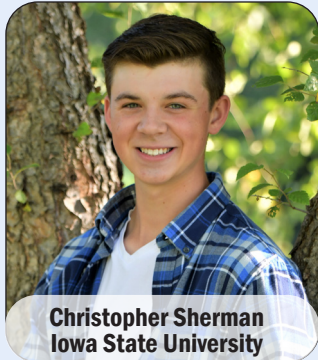
Contact Member Services at 319-377-1587 or email rebates@linncountyrec.com for questions. To apply for the Heat Plus Rate or information on our wiring diagram requirements, visit our website. Planning to install? Be sure you or your contractor/electrician contacts us so we can note your account.



LCREC Scholarship Winners Reflect On Their First Semester

One of the ways Linn County REC is committed to the communities we serve is through our college scholarship program. These students received scholarships last year, and below are reflections on their first semester. We wish them continued success as they complete their first year.

If you have a high school senior graduating in May and attending a college/university or technical school in Iowa, apply for one of our scholarships! **Applications are available on our website and must be postmarked by March 1, 2024.**



Christopher Sherman
Iowa State University

"First semester was one of the most enjoyable experiences of my learning career. I made new friends and experienced life away from home while pursuing a Mechanical Engineering degree. I enjoyed rock climbing, playing badminton, and am a member of the Ames Flyers Organization. I am grateful for this scholarship. Thank you for assisting me in this opportunity!"



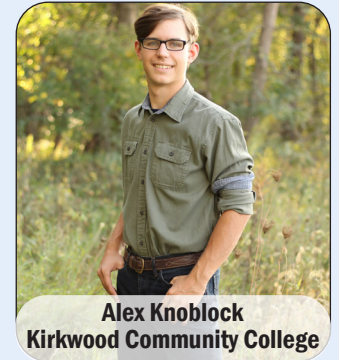
Alivia Miller
Kirkwood Community College

"My first semester was exciting and busy. I am pursuing a business degree and am excited to learn skills for my career. I want to thank Linn County REC, receiving this financial help has given me the chance to focus on my studies and reduce the stress associated with college. I am grateful for this opportunity to grow my knowledge and mindset."



Lindsey Hospodarsky
Iowa State University

"My decision to attend ISU to study Agricultural Communication has proved very rewarding. Thank you Linn County REC for granting me their generous scholarship. I have joined several clubs and serve as a College of Ag and Life Sciences Ambassador. I enjoyed learning, exploring options, and cannot wait to see what the future holds for me!"



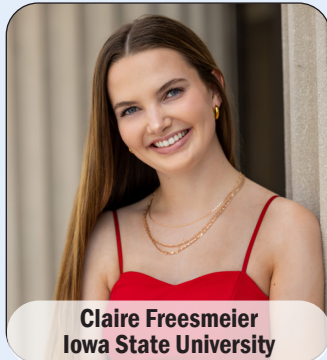
Alex Knoblock
Kirkwood Community College

"I would like to thank Linn County REC for the generous scholarship and appreciated the financial support. I am majoring in Diesel Ag Technology, and have enjoyed the hands-on experiences. I have learned about shop procedures, engines, and hydraulic systems. I am looking forward to studying powertrains next semester."



Alexis Pealer
Iowa State University

"My first semester was nothing short of great. I transferred 24 Kirkwood credits, so I was in more sophomore level classes. They weren't easy but taught me how to balance school life with my personal life. My favorite part was attending football games with my family and friends! Thank you Linn County REC for assisting me in this journey!"



Claire Freesmeier
Iowa State University

"My first semester was exciting, with opportunities to excel in my classes, meet new people, and get involved. I am majoring in Graphic Design, joined a sorority and am the Marketing Director for a student led event, "AfterDark." I would like to thank Linn County REC for this scholarship. I am receiving a great education to help set me up for success in my future."



Tanner Knight
University of Iowa

"I would like to thank Linn County REC for the generous scholarship. I was accepted into the Tippie College of Business and had many opportunities to develop my education. I play tenor saxophone in the Hawkeye Marching Band and am grateful for that experience. Thanks for supporting my education and providing me opportunities of a lifetime."



Josef Lemker
University of Iowa

"I am thankful for Linn County REC's scholarship. I had an amazing experience. I got involved in clubs and was accepted into Delta Sigma Pi. I have developed a lot professionally and as a student. I made many new friendships with people from all over. I have really enjoyed college so far and look forward to what else it has to offer."



Donate To RECare To Help Others In Our Community

RECare is a crisis fund for low-income members to help pay their electric bills and weatherize their homes. When you give to RECare, your donation goes directly to families in need throughout our community. A local community action agency distributes all funds; there are no administrative costs, and donations are tax-deductible.

If you'd like to contribute to RECare, sign up through SmartHub on our website or make a notation on your bill stub. The amount can be a one-time pledge or included with the monthly net amount on your bill statement. Discontinue any time by contacting our office.



What's four times more efficient and saves you thousands? An ENERGY STAR certified heat pump water heater!

How Does It Work?

Heat pump water heaters are a great alternative to the conventional electric resistance water heater. Like an air-source heat pump (for heating and cooling your home), heat pump water heaters use electricity to move heat from one place to another instead of generating heat directly. The result is a water heater that can be two to three times more energy-efficient than conventional electric resistance water heaters. The heat pump water heater will pull heat from the surrounding air and transfer it to heat water in the storage tank at a higher temperature. In short, heat pumps work like a refrigerator but in reverse.

Estimated Payback

With federal tax credits and our rebates, owning a heat pump water heater is more economical than ever. The estimated payback is now less than two years!

Average cost for HPWH installed	\$3,200
Inflation Reduction Act Tax Credit (if eligible)	(\$960)
Linn County REC Rebate	(\$650)
Total After Rebate and Tax Credits	\$1,590
Standard Electric Resistance Water Heater (avg cost)	(\$1,200)
Average difference between HPWH and Electric Resistance Water Heater	\$390
Estimated Savings (family of 3)	(\$208)
Estimated Payback (years)	1.87



Chicken Enchilada Soup

- | | |
|------------------------------------|----------------------------------|
| 3 cups chopped cooked chicken | 1 Tbsp chili powder |
| 1 (28oz) can green enchilada sauce | 2 Tbsp ranch dressing mix |
| 4 cups chicken broth | 1 (15oz) can black beans, rinsed |
| 2 Tbsp cumin | 1 (15oz) can pinto beans, rinsed |
| 1 (15oz) can corn, drained | 1 can Rotel, undrained |
| 2 cups pepperjack cheese, shredded | 1 (8oz) sour cream |

In a Dutch oven or large pot, combine chicken, enchilada sauce, broth, cumin, chili powder, ranch seasoning, black beans, pinto beans, corn, and Rotel tomatoes. Bring to a boil. Reduce heat and simmer for 15 to 20 minutes. Stir in the cheese and sour cream. Cook until the cheese has melted.

Yield: 8 people

ElectricCONNECTION, the official publication of Linn County Rural Electric Cooperative, is published monthly for members of Linn County Rural Electric Cooperative, 5695 REC Drive, P.O. Box 69, Marion, Iowa 52302. © Copyright 2024
This institution is an equal opportunity provider and employer.

