

Linn County REC – HONEYWELL – A3 Three Phase Meter Display

Three-phase meters display 7 items. The numbers 1-6 are displayed in the upper left corner and the 7th display is the segment test, which light up all areas of the display for verification all segments are working.

Label	Item Displayed
1. TOTAL KW h	+kWh (TOTAL)
2. MAX KW	kW (15-minute Demand)
3. Rate A KW h	+kWh (ON PEAK)
4. Rate C KW h	+kWh (OFF PEAK)
5. TOTAL KW h	-kWh (TOTAL GENERATION OR REVERSE kWh)
6. HOPS	# of Hops – AMI Communications
7. 888 Segment Test	

1. +kWh (TOTAL)



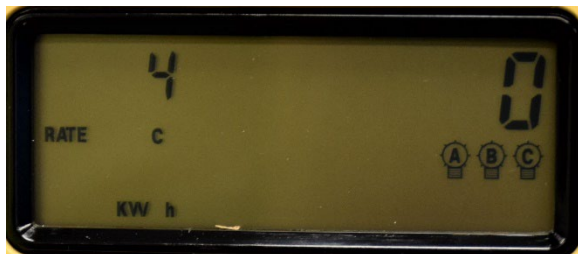
2. kW (15-minute Demand)



3. +kWh (ON PEAK)



4. +kWh (OFF PEAK)



5. -kWh (TOTAL GENERATION OR REVERSE kWh)



6. # of Hops – AMI Communications



7. 888 Segment Test

