



Apply For Our In State College Scholarships

Linn County REC is awarding multiple scholarships to high school seniors who are entering college in the fall of 2022. Applicants are graded in multiple categories and not exclusively on scholastic effort. Applications with rules and instructions are available online at www.linncountyrec.com. **Application deadline is March 1, 2022.** Scholarship recipients will be notified by mail and posted on our website April 1, 2022.

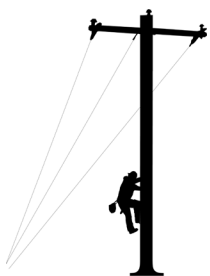
If you have a high school senior graduating in May that will be attending a college, university or vocational/technical school in the state of Iowa, the following scholarships are now available:

Four Year Degree

- Scholarships are available for graduating high school seniors who will be entering a full-time undergraduate course of study at an accredited college or university in Iowa.

Two Year Degree

- Scholarships are available for graduating high school seniors who will be entering a full-time associate's degree course of study at an accredited two year vocational/technical school in Iowa.



Lineman Scholarship Available

Linn County REC also offers the Allen Feickert Memorial Scholarship for **any graduating high school senior in the state of Iowa** who is entering the Powerline Diploma Program at Northwest Iowa Community College in Sheldon, Iowa.

As a part of our commitment to the communities we serve, Linn County REC has awarded college scholarships since 1995 to graduating high school seniors living in a home served by Linn County REC.

BUDGET BILLING



Control your energy
bill with a fixed monthly payment.

Are you looking for a way to avoid the seasonal ups and downs on your utility bill? Know what your bill is going to be every month with budget billing. This plan allows **our residential members** to pay in equal monthly installments so you know how much to budget for your Linn County REC bill.

Monthly payments will be equal to 1/12 of your estimated annual billings based on your usage history.

Budget Review

At the end of your budget period, we will re-evaluate your budget by averaging your last 12 months usage. If your actual usage was higher or lower than estimated, we will apply that amount to your new 12 month average. This will be your new budget billing monthly payment. Members are notified of their new monthly payment one month prior to their re-evaluation.

If you would like to set up budget billing on your account or would like more information, please call our office to speak with a Consumer Services Representative.

Know Your Energy Use with SmartHub

Did you know that you can view your energy usage from your desktop or mobile device? Through detailed graphs on our SmartHub app, you can monitor your daily consumption 24/7 and see how it is trending over time. You can even download your data into a spreadsheet file with the easy green button feature.



Download the SmartHub app for free! It's available in the Apple App Store or Google Play Marketplace, or by scanning the QR codes below.

Once downloaded, select Linn County REC as your electric provider and use the same username and password that you use from your desktop computer, or create an account.

To learn more about SmartHub, watch our introduction video on our YouTube channel or on our website at www.linncountyrec.com.



ANDROID



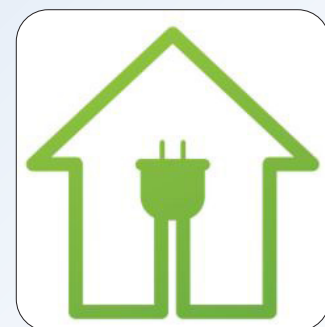
iOS

2022 Energy Efficiency Incentives Available

In 2022, Linn County REC will continue to offer energy efficiency incentives for our residential, agricultural and commercial members.

Installing more efficient products saves you and the cooperative money by helping us manage resources to better meet demands.

Our rebate program offers our membership equipment that reduces demand (kW), saves energy, and efficiently grows load. Below are our 2022 residential rebates:



2022 Residential Rebates

ENERGY STAR Air-Source Heat Pump	\$300/ton
ENERGY STAR Air-Source Heat Pump - Hybrid "Gas Backup"	\$400/ton
ENERGY STAR or NEEP listed Mini-Split	\$200/ton
NEEP Listed Air-Source Heat Pump	\$500/ton
NEEP Listed Air-Source Heat Pump - Hybrid "Gas Backup"	\$600/ton
ENERGY STAR Ground Source Heat Pump	\$450/ton
ENERGY STAR Ground Source Heat Pump Hybrid "Gas Backup"	\$550/ton
ENERGY STAR Ground Source Heat Pump Replacement	\$150/ton
HVI Certified Mechanical Ventilation (ERV/HRV)	\$250/unit
ENERGY STAR Hybrid Electric Heat Pump Water Heater	\$650/unit
ENERGY STAR Hybrid Electric Heat Pump Water Heater (Replacing Natural Gas or Propane)	\$800/unit
Geothermal Assisted Storage Unit/ Energy Recovery	\$150/unit
ENERGY STAR Heat Pump Dryer	\$150/unit
Electric Vehicle Level II Charger	Up to \$300/unit
Premier Electric Home Bonus	\$1,000

Visit www.linncountyrec.com for more information on available rebates for 2022, including commercial, agricultural and multi-family rebates. All rebates filed on or after January 1st will need to meet the new 2022 criteria and can be filed online. If you have any questions about our rebate program, please contact our Member Services department at 319-377-1587.



LINN COUNTY RURAL ELECTRIC COOPERATIVE



Winter Storm Safety

Snow and ice storms can lead to downed power lines and outages. Follow these tips to stay safe should you find yourself in a severe winter event:

- Never touch a fallen power line. Assume all wires on the ground are electrically charged, even if it's not jumping or sparking. Call Linn County REC to report it immediately.
- Use a safe alternate heating source, such as a fireplace or wood-burning stove, during a power outage. Never leave a heating source unattended.
- Fuel and wood burning heating sources should always be properly vented. Be sure to follow manufacturer's directions.
- Make sure carbon monoxide detectors and smoke detectors are working properly.
- If you use a portable generator to power a heating source, be sure the generator is located outside your house for proper ventilation. Follow manufacturer's directions for operating the generator.
- Unplug sensitive electronic equipment and as many appliances as possible. This will prevent damage from a power surge that may occur during power restoration.

Members can report an outage by:

Phone: Call toll free 1-888-271-6250. This number is for outages only. Calls answered 24 hours a day.

Text: Visit our website's storm and outage center to enroll. Once enrolled, text "outage" to 55050 on your cell phone. Note: We must have your cell phone number on file for this option.

SmartHub App: Download the FREE mobile app in the Apple App store or Android Marketplace.

How A Diverse Generation Mix Benefits Our Members

Linn County REC is committed to providing electricity that is reliable, cost effective and sustainable. One hundred percent of our electric power needs are provided by Central Iowa Power Cooperative (CIPCO), a generation and transmission cooperative. CIPCO meets our energy needs with a diverse fuel mix of coal, hydropower, landfill gas, wind and solar energy resources.

In today's energy landscape, it's vital that we draw from a diverse pool of fuel resources to responsibly meet the 24/7 electricity demands of our members. This benefits all Linn County REC members by reducing our exposure to fluctuating energy markets.

Last summer, CIPCO announced a Power Purchase Agreement (PPA) for Coggon Solar, LLC, a 100 megawatt solar facility in eastern Iowa. This project was initiated to help replace lost energy due to the closure of the Duane Arnold Energy Center nuclear plant in 2020.

Located approximately two miles from Coggon, the site was selected near an existing CIPCO substation, making it more cost-effective. Being directly connected to CIPCO's transmission system also increases reliability for everyone.

Fuel diversity is good for Linn County REC members because it:

- Moves us to a more sustainable and environmentally friendly power supply mix
- Helps lessen exposure to fluctuating energy market prices that could lead to increased costs; ensures stable energy prices for members
- Increases reliability that ensures power will be available across a broad spectrum of conditions; such as severe weather events

CIPCO continues to invest in new technology and renewable energy production, supporting Iowa's development of renewable energy resources. For more information about this project, you may contact CIPCO at 515-362-7699 or visit their website at www.cipco.net.

Generate Safely With These Tips

Never connect a standby generator into your home's electrical system. There are only two safe ways to connect a standby generator to your equipment.

Stationary Generator:

- An approved generator transfer switch, which keeps your house circuits separate from Linn County REC's, should be installed by a professional.



Portable Generator:

- Plug appliances directly into the outlet provided on the generator.
- Set up and run your generator in a well-ventilated area outside the home. Make sure it's out and away from your garage, doors, windows and vents. The carbon monoxide generated is deadly.
- Use a heavy duty extension cord to connect electric appliances to the outlet on the generator.
- Start the generator first before connecting appliances.

Official Complaint Notice

Any complaint that you, as a member of Linn County REC, may have against the cooperative will be answered by contacting us during normal business hours (7:30 a.m. - 4:00 p.m., Monday through Friday) by calling 319-377-1587 or toll free at 1-800-332-5420, in person at 5695 REC Drive, Marion, IA., or by writing to Linn County REC, P.O. Box 69, Marion, IA., 52302-0069. You may also email us at lcrc@linncountyrec.com.

If your complaint is related to service disconnection, safety or engineering standards, or renewable energy and Linn County REC does not resolve your complaint, you may request assistance from the Iowa Utilities Board by calling (515) 725-7321, or toll-free 1-877-565-4450, by writing to 1375 E. Court Avenue, Des Moines, IA 50319-0069, or by email to customer@iub.iowa.gov.

Statement of Non-Discrimination

Linn County REC receives funding from the USDA and is required to provide notice of the following:

In accordance with Federal civil rights law and U.S. Department of Agriculture (USDA) civil rights regulations and policies, the USDA, its Agencies, offices, and employees, and institutions participating in or administering USDA programs are prohibited from discriminating based on race, color, national origin, religion, sex, gender identity (including gender expression), sexual orientation, disability, age, marital status, family/parental status, income derived from a public assistance program, political beliefs, or reprisal or retaliation for prior civil rights activity, in any program or activity conducted or funded by USDA (not all bases apply to all programs). Remedies and complaint filing deadlines vary by program or incident.


Persons with disabilities who require alternative means of communication for program information (e.g., Braille, large print, audiotope, American Sign Language, etc.) should contact the responsible Agency or USDA's TARGET Center at (202)720-2600 (voice and TTY) or contact USDA through the Federal Relay Service at (800)877-8339. Additionally, program information may be made available in languages other than English.

To file a program discrimination complaint, complete the USDA Program Discrimination Complaint Form, AD-3027, found online at www.ascr.usda.gov/complaint_filing_cust.html and at any USDA office or write a letter addressed to USDA and provide in the letter all of the information requested in the form. To request a copy of the complaint form, call (866) 632-9992. Submit your completed form or letter to USDA by:

- (1) Mail: U.S. Department of Agriculture
Office of the Assistant Secretary for Civil Rights
1400 Independence Avenue, SW
Washington, D.C. 20250-9410;
- (2) Fax: (202) 690-7442; or
- (3) Email: program.intake@usda.gov

USDA is an equal opportunity provider, employer, and lender.

Chili Sour Cream Rice Bake

- 
- 1 lb lean ground beef
 - 1 (1.75-oz) packet chili seasoning
 - 1 (8-oz) can tomato sauce
 - 1 (15-oz) can chili beans, undrained
 - 1 (15-oz) can diced tomatoes, undrained
 - 3 cups cooked rice
 - 1 cup cottage cheese
 - 1 cup sour cream
 - 1½ cups shredded cheddar cheese

Preheat oven to 350°F. Spray a 9×9-inch baking dish with cooking spray. Brown meat; drain off fat and return to skillet. Add chili seasoning, tomato sauce, chili beans, and diced tomatoes. Stir and simmer for 5 minutes. Mix together cottage cheese, sour cream, and cooked rice. Spread rice mixture into the bottom of the prepared dish. Top with chili. Sprinkle cheese on top of casserole. Bake uncovered for 20 to 25 minutes.

YIELD: 6 people



LINN COUNTY RURAL ELECTRIC COOPERATIVE

WWW.LINNCOUNTYREC.COM

ElectricCONNECTION, the official publication of Linn County Rural Electric Cooperative, is published monthly for members of Linn County Rural Electric Cooperative, 5695 REC Drive, P.O. Box 69, Marion, Iowa 52302. © Copyright 2022

This institution is an equal opportunity provider and employer.

