



Power Up!

How Much Are Those Old Appliances Costing You? Recycle Them and Save!



Receive up to a \$50 incentive from Linn County REC when you recycle your inefficient, working refrigerator, freezer or window air conditioner.

Did you know that the average refrigerator aged 10 years or older contains more than 120 pounds of recyclable steel. The energy saved by recycling one such refrigerator is equivalent to almost 290 kilowatt hours. That's enough energy to run a new ENERGY STAR qualified refrigerator for 8 months.

Recycling old appliances saves you and your cooperative energy and helps reduce growing peak load demand. So if your spring cleaning includes getting rid of your refrigerator, freezer or window AC, be sure to take advantage of one of our recycling options:

Option #1: Receive a \$50 incentive when the retailer hauls away your old appliance when they deliver your new one (requires application form).

Option #2: Receive a \$50 incentive when you take your appliance to the landfill or recycling center of your choice (requires application form).

Option #3: Receive a \$35 incentive for your refrigerator or a \$25 incentive for your freezer or window air conditioner when you contact Linn County REC to request curb side collection of your appliance by our contracted recycling vendor.

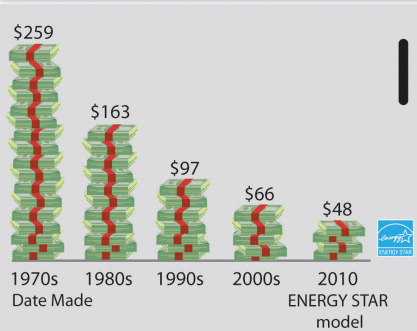
In order to obtain your incentive:

- your recycled appliance must be in **working** condition (option 1 & 2)
- have a receipt that is dated and lists the type of appliance recycled (option 1 & 2)
- complete the incentive form and follow all terms and conditions including nameplate information from your old appliance

To download our incentive form and view list of recyclers in your area, visit www.linncountyrec.com.

The Cost of Cool Food

If your fridge dates from the 1980s, you could save more than \$100 each year by replacing it with an ENERGY STAR qualified model. Compare the average annual electricity costs for refrigerators manufactured in the following years:



Source: U.S. Department of Energy

We Are Now Mobile

Linn County REC's website is now mobile! Pull up www.linncountyrec.com on your smart phone and you will automatically be directed to our new mobile site with a list of our most popular links for easier navigation.



You can easily access:

- **account information**
- **energy efficiency incentives**
- **outage reporting**
- **news and events**
- **and it's FREE**

Like our new mobile site? We would like to hear back from you. Send comments and suggestions to lcrc@linncountyrec.com.



Emerging Energy: Make A Difference Today

Did you know that you can make a difference in Iowa's energy future for as little as \$2.00? When you purchase Emerging Energy™, Linn County REC's renewable energy program, wind generated electricity enters Iowa's electric grid on your behalf, reducing the need for energy produced from other sources.

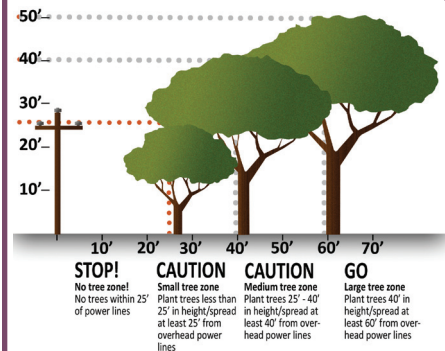
Emerging Energy comes from wind farms located in Hancock and Story County. Linn County REC's power supplier recently announced the purchase agreement of a third wind farm located in Delaware County that

will start producing electricity in late 2011.

You can choose your level of support. Emerging Energy is sold in blocks of 100 kilowatt hours (kWh's) at \$2.00 per block. The amount of the total Emerging Energy blocks you purchase will be added to your monthly charges and shown as a separate line item on your bill. You can cancel or change your participation level at any time by contacting our office.

Sign up by filling out our form on our website or contact our office.

Plant In The Right Place



If planting trees and shrubs are part of your landscaping projects this year, don't plant under or near power lines. Trees interfering with power lines are one of the top reasons for power outages. Storms and winds can also cause branches to rub on power lines causing blinking lights in your home.

Consider the tree's mature height before you plant. Take the mature height of the tree and plant it that distance from the power line. For example, if the tree you are planting will be 60 feet tall, plant the tree 60 feet away from the power line. For information on the average mature height of some common trees, visit the arbor day foundation's website at www.arborday.org.

Please be aware that if tree limbs grow into the proximity of power lines, Linn County REC may trim the tree to prevent damage to the line and eliminate potential hazards and outages. We will not trim beyond what is necessary to ensure public safety and reliability of service.

For more safety tips, visit our website at www.linncountyrec.com



Energy Efficiency *Tip of the Month*

By replacing your five most-used lightbulbs with ENERGY STAR-qualified bulbs, you could save \$70 a year.

Source: U.S. Environmental Protection Agency

Protect Your Home From Power Surges

80% of all power surges are generated from inside of your home.

Many people assume that power surges are only caused by lightning strikes. It's true that 20% of all your electrical surges come from outside sources such as nearby lightning strikes, tree limbs touching power lines, or even small animals getting into transformers.

These irregular variations in voltage can enter a home through several paths. In the case of lightning, it can take the path of the cable TV or satellite dish cable, through incoming telephone lines, or through the incoming electrical service line.

But according to the Department of Energy, the other 80% come from you. That's right. Every time your air conditioner starts up, every time your microwave runs, and every time you run your dryer, garbage disposal, dishwasher, garage door opener, hot tub, jacuzzi, well pump, sump pump, ceiling fan etc., you are sending surges

through your entire electrical system that last fractions of a second.

The surges created by your appliances eventually take their toll on the delicate microprocessors and circuit boards located inside your appliances shortening their life span.

To protect your home from power surges we recommend disconnecting electronic equipment and as many appliances as possible during a storm.

To protect the items that you can't leave unplugged, use surge suppressors. For a well protected system, you need to have primary and secondary surge suppression.

The primary, or "whole house", is placed behind your meter or main panel and protects against surges that may be carried to your home via power lines.



The secondary, also called "plug in" or "point of use", protects individual devices against low level internal surges that do not come in through power lines. Purchase power strips with the maximum amount of surge protection that insures your investment.

Meter based surge suppression is available at Linn County REC. Other surge suppression equipment is available at local hardware and electronics stores.

Source: Department of Energy, Minnesota Electricians

Shared Services Save Member Dollars

Linn County REC continues to utilize a shared services relationship with two neighboring cooperatives, Eastern Iowa REC in Wilton and East-Central Iowa REC in Urbana. This arrangement goes back to the mid-1990's. By sharing opportunities or services, each of the cooperatives can save member dollars.

Shared services are a proven way to save member dollars with joint purchasing and personnel.

The three cooperatives utilize a purchasing alliance agreement with Rural Electric Supply Cooperative (RESCO). This agreement saves dollars for each cooperative by using bulk purchasing and guaranteed stock levels (allows each cooperative to lower its inventory). The arrangement provides access to much needed material in storm situations when materials are in high demand.

RESCO is also a cooperative and pays a capital credit annually.

The three organizations have researched and invested in major software and hardware purchases jointly as well. Supervisory Control and Data Acquisition (SCADA) software and hardware, outage management and geographic information systems (GIS) were selected and purchased jointly to save dollars and enable the three cooperatives to share expertise and experience. These are big ticket items where significant dollars have been saved.

The group also shares employees where it makes sense. As an example, East-Central Iowa uses Linn County REC Human Resource personnel assistance. Linn County REC uses Eastern Iowa REC dispatch for after-hours calls.

Shared services are a proven way to save member dollars.



LCREC Model Home Showcases Geothermal This June

Learn the benefits of having the most energy efficient heating and cooling system available on the market today by visiting the Linn County REC geothermal model home. The model home is currently under construction at 2970 Diamond Mil Lane in Coralville and will be showcased during the Iowa City Parade of Homes.

General Contractor Aaron Klosterman Construction designed and built the home with energy efficiency in mind. The 4,400 square foot house features a 5 ton geothermal heating and cooling system that was installed by Bosch Geothermal.

This all electric, HERS rated home will be featured June 4, 5, 7, 9, 11, 12.



- 1 tablespoon all-purpose flour
- 1 large oven roasting bag
- 4 medium tart apples, peeled and chopped
- 2 cups apple juice
- 1 cup raisins
- 1/2 cup packed brown sugar
- 1 teaspoon ground cinnamon
- 1 boneless fully cooked ham (about 6 pounds)

Shake flour in the oven roasting bag. Place in an ungreased 13-in. x 9-in. baking pan. Place the apples, apple juice, raisins, brown sugar and cinnamon in the bag; mix well. Place ham in bag. Close bag. Cut six 1/2-in. slits in top of bag.

Bake at 325° for 1-3/4 to 2 hours or until a meat thermometer reads 140°. Let ham stand for 10 minutes before slicing. Serve with sauce. Yield: 16 servings.

What's YOUR Incentive?

Since about 25% of our energy dollar goes toward heating water, having an energy efficient unit is important. The average water heater lasts for 13 years; if yours is close to that age or older, you might consider replacing your unit with a new, more energy efficient unit. Newer models are better insulated and use about 18% less energy to operate than older models.



Before purchasing, be sure to use the Energy Guide label to compare the operating costs of water heaters you're considering. Each label shows estimated annual energy consumption, how a particular water heater measures up against comparable ones and estimated annual operating cost.

Linn County REC offers incentives for the following high efficiency water heating systems:

- Premium Electric Storage Water Heater = up to \$150**
- Heat Pump Water Heater = \$500**
- Solar Water Heater = \$500**
- Desuperheater = \$100**

Visit www.linncountyrec.com for complete incentive criteria, terms/conditions and to download incentive forms.

To receive an incentive from Linn County REC:

- Must be or have been a member at service location
- Complete ALL fields on incentive form
- Provide a copy of the sales receipt
- Provide ALL additional required documentation (i.e. Energy Star® verification)
- Must be received within six months of installation

Members contacted for additional information on incomplete/unsigned forms will be assessed a 10% reduction of incentive amount. Need help filling out an incentive form? Visit the video center on our website for a step by step tutorial on the filing process. Questions about our incentive program? Contact our office to speak with member services.

