



Linn County REC In State College Scholarships Available

As a part of our commitment to the communities we serve, Linn County REC has awarded college scholarships since 1995 to graduating high school seniors living in a home served by Linn County REC.

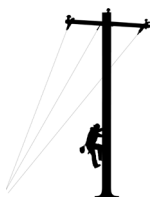
This year we will award multiple scholarships to high school seniors who are entering college in the fall (2021 - 2022 school year). If you have a high school senior graduating in May that will be attending a college, university or vocational/technical school in the state of Iowa, the following scholarships are now available:

Four Year Degree

- \$1,000 scholarships for graduating high school seniors who will be entering a full-time undergraduate course of study at an accredited college/university in Iowa.

Two Year Degree

- \$500 scholarships for graduating high school seniors who will be entering a full-time associate's degree course of study at an accredited two year vocational/technical school in Iowa.



Lineman Scholarship Available

Linn County REC also offers a \$1,000 Allen Feickert Memorial Scholarship for **any graduating high school senior in the state of Iowa** who is entering the Powerline Diploma Program at Northwest Iowa Community College.

Applicants are graded in multiple categories and not exclusively on scholastic effort. Applications with rules and instructions are available for download on our website at www.linncountyrec.com/your-cooperative/scholarships. **Applications must be postmarked on or before March 1, 2021.** Scholarship recipients will be notified by mail and posted on our website April 1, 2021.

New Year's Resolutions: A Guide to Energy Savings

For most of us, keeping those New Year's resolutions is easier said than done. But keeping a resolution to be more energy efficient in 2021 is easy with these tips:

- **Switch to LED.** Replace incandescent bulbs with LEDs. They use 70 - 90% less energy and last much longer.
- **Plug energy leaks.** Install weatherstripping around doors and windows. Check for and seal air leaks in the attic, basement and around plumbing and wiring access points.
- **Adjust temperatures.** Properly adjust the thermostat when your home is unoccupied to avoid heating or cooling an empty house. A programmable thermostat adds convenience and optimizes savings.
- **Heat and cool naturally.** Take advantage of natural sunlight and window shades to provide no-cost heating and cooling.
- **Power down.** Turn off or unplug computers, battery chargers or other electronic equipment when they are not in use.

Know Your Energy Use with SmartHub

Did you know that you can view your energy usage from your desktop or mobile device? Through detailed graphs on our SmartHub app, you can monitor your daily consumption 24/7 and see how it is trending over time. You can even download your data into a spreadsheet file with the easy green button feature.



Download the SmartHub app for free! It's available in the Apple App Store or Google Play Marketplace. Or by scanning the QR codes below.

Once downloaded, select Linn County REC as your electric provider and use the same username and password that you use from your desktop computer or create an account.

To learn more about SmartHub, watch our introduction video on our YouTube channel or on our website at www.linncountyrec.com.



ANDROID



iOS

New Tree Trimming Process Increases Reliability

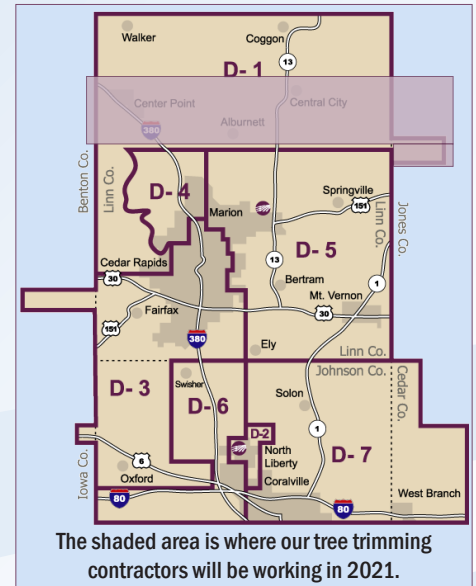
To ensure safe and reliable service for all of our members, routine trimming or pruning of trees and other vegetation – such as vines, shrubs and bushes – is necessary. Branches that come into contact with power lines can cause power impairments in many ways by reducing voltage, causing short circuits, complete outages and fires. The result can be injuries to those near the lines or a lack of power to our homes and businesses.

These are just a few of the reasons why our ongoing vegetation management program is so important.

Linn County REC has a year round program that maintains our right-of-way (ROW). A ROW refers to a strip of land underneath or around power lines that Linn County REC has the right and responsibility to maintain and clear. A safe ROW is 15 feet of clearance on either side of the primary conductors and 20 feet of overhead clearance above the highest wire on the pole.

New Pruning Process

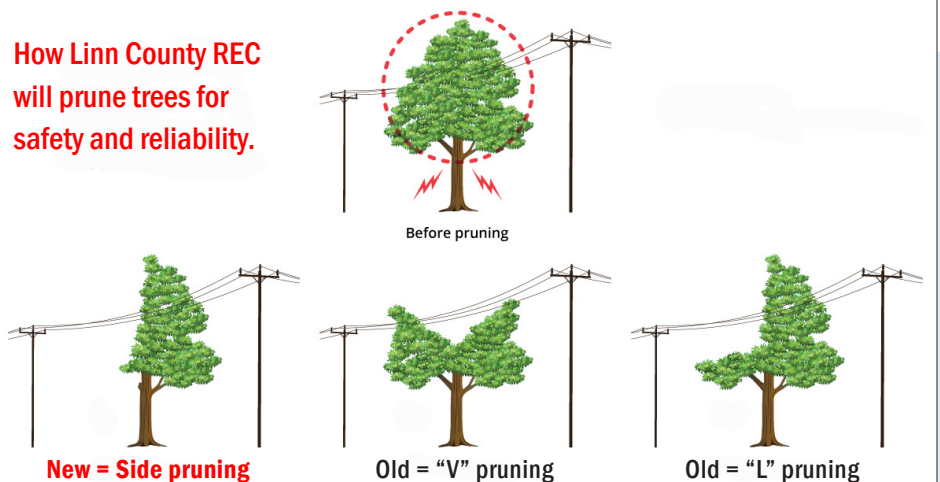
In the past, our contractors would trim trees using the “V” or “L” pruning process (see below). This



method has not been effective as the trees grow back too quickly, increasing costs and reducing reliability. We will begin using the straight vertical side pruning process beginning 2021.

Please contact Linn County REC before you trim or remove trees near any power service or line. If you would like to report a tree that needs trimmed within the 15 feet ROW, please contact our Operations Department or fill out the tree permit form at www.linncountyrec.com

How Linn County REC will prune trees for safety and reliability.



LINN COUNTY RURAL ELECTRIC COOPERATIVE

How Safe and Reliable Electricity Reaches You

Linn County REC's advanced metering system has provided useful data that has led to many changes at your cooperative. Throughout 2021, we will have several articles featuring information on how we can all benefit from these changes. The first is discussing how safe and reliable electricity reaches you and why time of energy use matters.

How electricity reaches you

Linn County REC is a member owner of Central Iowa Power Cooperative (CIPCO), a generation and transmission (G&T) cooperative that provides power to 13 electric cooperatives in Iowa including Linn County REC.

Before we can send electricity to your home or business, that electricity is generated by CIPCO. Once the electricity has been generated, it travels over CIPCO's high-voltage transmission lines to substations, where the voltage is reduced to a safer level. The electricity then travels over our distribution power lines and into your home.

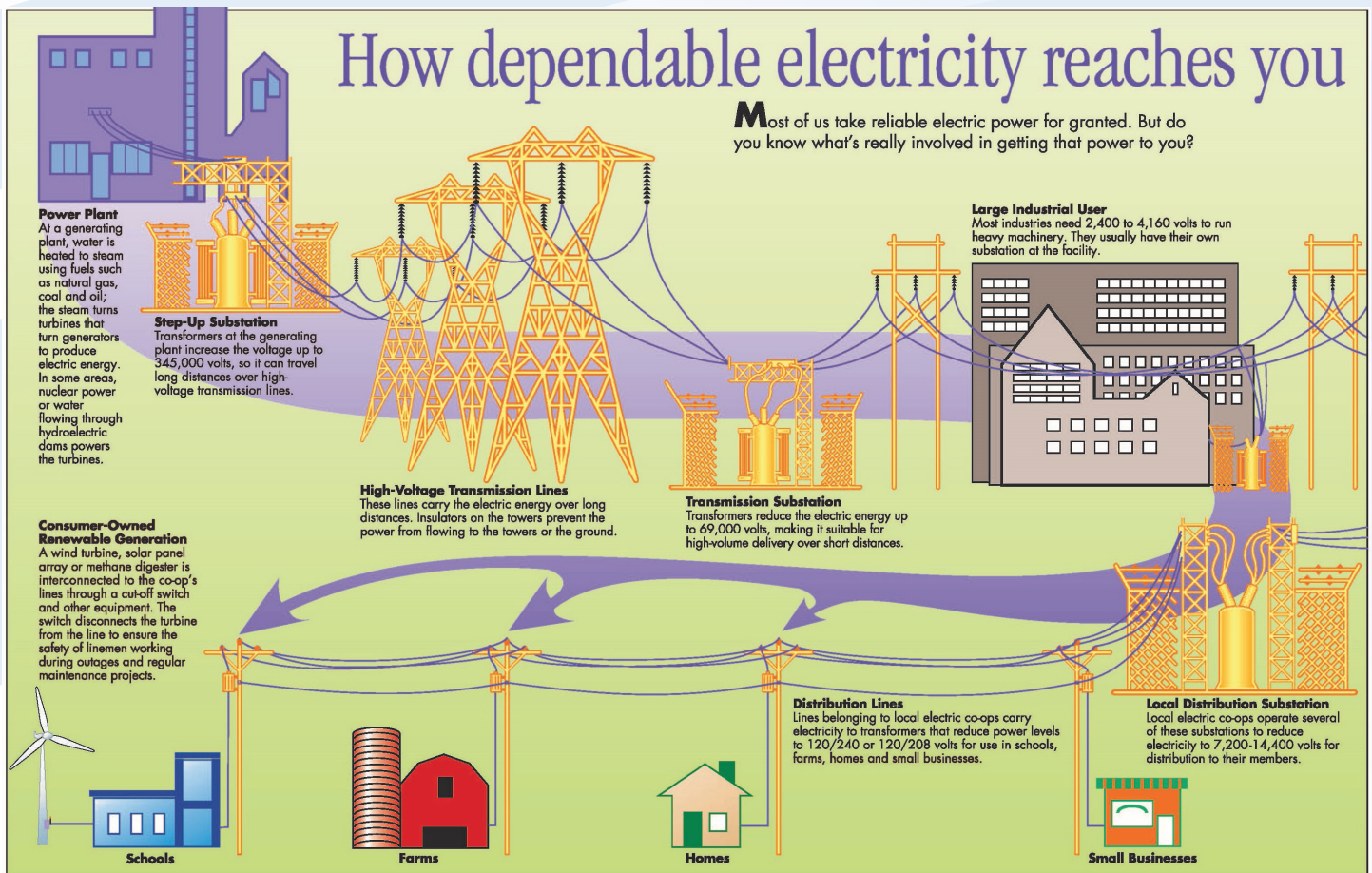
Linn County REC purchases kilowatt hours from CIPCO based on the kilowatt hours consumed and the demands of our members.

Time of use matters

Did you know that when you use electricity often matters as much as how much electricity you consume? Electricity use fluctuates throughout the day based on consumer demand. Linn County REC must be able to provide enough electricity to meet the energy demands of our members during times of highest energy use, also known as "on-peak hours". Linn County REC's peak is currently 4:00 pm to 9:00 pm daily, typically when families return home from work or school, cook dinner and use appliances the most.

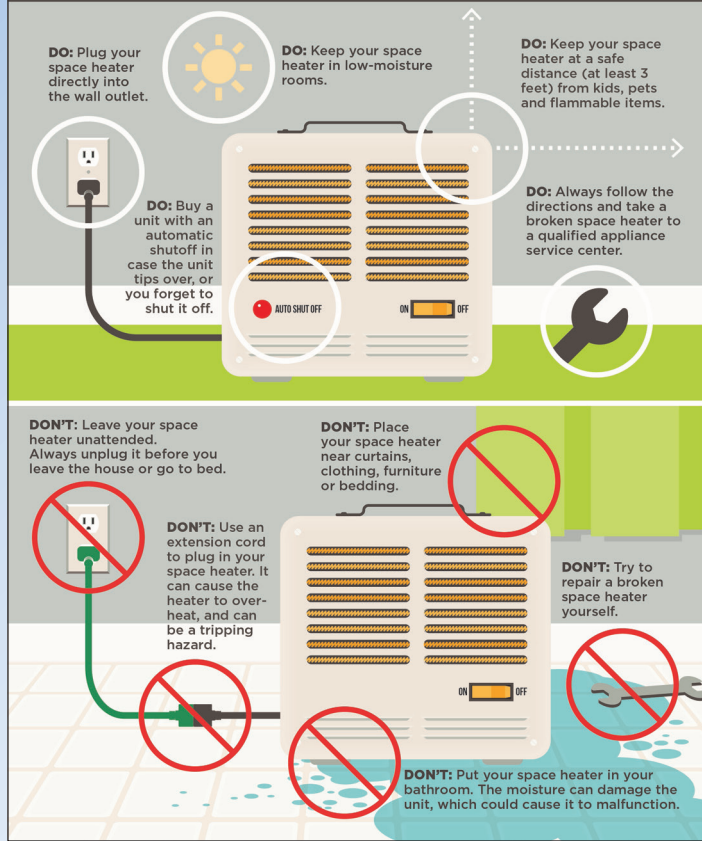
Electricity produced during this peak time costs more to both Linn County REC and our members. To reduce peak energy demand and save money, we encourage electricity use during off-peak hours -- when energy is less expensive to provide. Similar to saving money by attending a movie matinee, you can keep more money in your wallet simply by using electricity during an off-peak time period.

Saving energy can be simple. Just remember, by shifting your energy use to off-peak times, you have the power to save you and your cooperative money.



Space Heater Safety Tips

Space heaters are a great way to warm specific rooms in your home without having to crank up the thermostat, but using space heaters doesn't come without risk! Use the tips below to keep your home safe.



Official Complaint Notice

Any complaint that you, as a member of Linn County REC, may have against the cooperative will be answered by contacting us during normal business hours (7:30 a.m. - 4:00 p.m., Monday through Friday) by calling 319-377-1587 or toll free at 1-800-332-5420, in person at 5695 REC Drive, Marion, IA., or by writing to Linn County REC, P.O. Box 69, Marion, IA., 52302-0069. You may also email us at lcrc@linncountyrec.com.

If your complaint is related to service disconnection, safety or engineering standards, or renewable energy and Linn County REC does not resolve your complaint, you may request assistance from the Iowa Utilities Board by calling (515) 725-7321, or toll-free 1-877-565-4450, by writing to 1375 E. Court Avenue, Des Moines, IA 50319-0069, or by email to customer@iub.iowa.gov.

Statement of Non-Discrimination

Linn County REC receives funding from the USDA and is required to provide notice of the following:

In accordance with Federal civil rights law and U.S. Department of Agriculture (USDA) civil rights regulations and policies, the USDA, its Agencies, offices, and employees, and institutions participating in or administering USDA programs are prohibited from discriminating based on race, color, national origin, religion, sex, gender identity (including gender expression), sexual orientation, disability, age, marital status, family/parental status, income derived from a public assistance program, political beliefs, or reprisal or retaliation for prior civil rights activity, in any program or activity conducted or funded by USDA (not all bases apply to all programs). Remedies and complaint filing deadlines vary by program or incident.

Persons with disabilities who require alternative means of communication for program information (e.g., Braille, large print, audiotope, American Sign Language, etc.) should contact the responsible Agency or USDA's TARGET Center at (202)720-2600 (voice and TTY) or contact USDA through the Federal Relay Service at (800)877-8339. Additionally, program information may be made available in languages other than English.

To file a program discrimination complaint, complete the USDA Program Discrimination Complaint Form, AD-3027, found online at www.ascr.usda.gov/complaint_filing_cust.html and at any USDA office or write a letter addressed to USDA and provide in the letter all of the information requested in the form. To request a copy of the complaint form, call (866) 632-9992. Submit your completed form or letter to USDA by:

- (1) Mail: U.S. Department of Agriculture
Office of the Assistant Secretary for Civil Rights
1400 Independence Avenue, SW
Washington, D.C. 20250-9410;
- (2) Fax: (202) 690-7442; or
- (3) Email: program.intake@usda.gov

USDA is an equal opportunity provider, employer, and lender.

Monterey Jack Chicken & Rice

- 3 - 3/4 cups cooked rice
- 2 cups chopped cooked chicken
- 1 (8-oz) container sour cream
- 1 (10.75-oz) can condensed cream of chicken soup
- 5-oz frozen spinach, thawed and drained
- 1 cup shredded Monterey Jack cheese, divided
- 1 garlic clove minced
- 1 (6-oz) can French's French Fried Onions, divided

Preheat oven to 350°. Lightly spray a 9x13-inch pan with cooking spray.

In a large bowl, combine cooked rice, cooked chicken, cream of chicken soup, sour cream, drained spinach, 1 cup cheese, garlic and 1/2 can of French's French Fried Onions.

Pour into prepared pan. Sprinkle remaining shredded cheese and onions on top of rice mixture. Bake, uncovered, for 30 to 40 minutes.



LINN COUNTY RURAL ELECTRIC COOPERATIVE

WWW.LINNCOUNTYREC.COM

ElectricCONNECTION, the official publication of Linn County Rural Electric Cooperative, is published monthly for members of Linn County Rural Electric Cooperative, 5695 REC Drive, P.O. Box 69, Marion, Iowa 52302. © Copyright 2021

This institution is an equal opportunity provider and employer.

