



## Linn County REC's New Rebate Program For 2022

Linn County REC has a long history of offering our members rebates for purchasing and installing energy efficient equipment. We work to educate and provide energy solutions that benefit our membership.

As market acceptance and equipment efficiencies increase for energy efficient products, many of the rebates we offered in the past have become baseline efficiency and reached a level

of high adoption.

For 2022, we have re-evaluated our rebate program to offer our membership equipment that reduces demand, saves energy, and efficiently grows load. The focus will be on equipment that supports Beneficial Electrification. We look forward to working with you! As always, give Member Services a call if you have any questions.



## 2022 Rebate and Incentive Program

### RESIDENTIAL

#### Heating and Cooling (200% - 400% Efficient)

- ENERGY STAR listed Geothermal Heat Pump
- ENERGY STAR and NEEP listed Air-Source Heat Pump including Hybrid and Ductless Mini Splits

#### Water Heating (200% - 350% Efficient)

- ENERGY STAR Heat Pump (Hybrid) Water Heater
- Energy Recovery Water Heater (desuperheater connected to geothermal)

#### Ventilation (Recovering 70% - 80% of Energy)

- ENERGY STAR HRV (heat recovery ventilation) or ERV (energy recovery ventilation)

#### Appliance (28% More Efficient)

- ENERGY STAR Heat Pump Electric Dryer

#### Electric Vehicle Charger

- Level II Charger

#### New Home Construction (20% More Efficient Than Energy Code)

- Premier Electric Home Bonus

### COMMERCIAL AND AGRICULTURE

Custom incentives available for both Commercial and Agricultural facilities for equipment or measures that reduce demand between the hours of 4 PM - 9 PM

- Custom rebates require pre-approval from Linn County REC

#### Note:

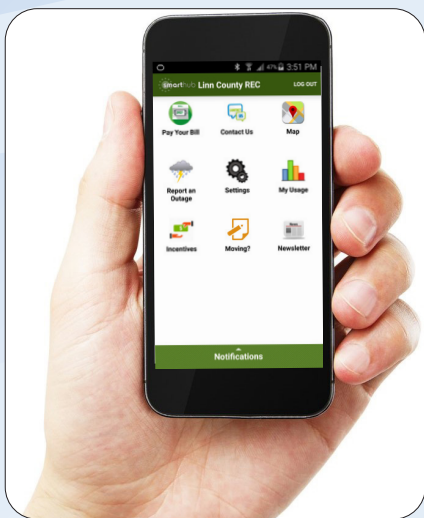
1. Always check the terms and conditions on the rebate form(s) before submitting your application to see if you qualify.
2. You have up to three months from date shown on your invoice to apply for the rebate.
3. These program offers are subject to change at any time. Always check our website ([www.linncountyrec.com](http://www.linncountyrec.com)) for the current form(s) and terms and conditions.
4. Rebate amounts under \$500 will show as a credit on your bill statement.

\* 2022 Forms will be available on our website after January 1st

## Stay Informed With The SmartHub App

Check to see if your account is affected by an outage and report one through Linn County REC's SmartHub app!

It is available for free in the Apple App Store (iPhone or iPad) or Google Play Marketplace (Android phone or tablet), or scan the QR codes below.



Once downloaded, select Linn County REC as your electric provider and use the same username and password that you use from your desktop computer, or create an account.



ANDROID



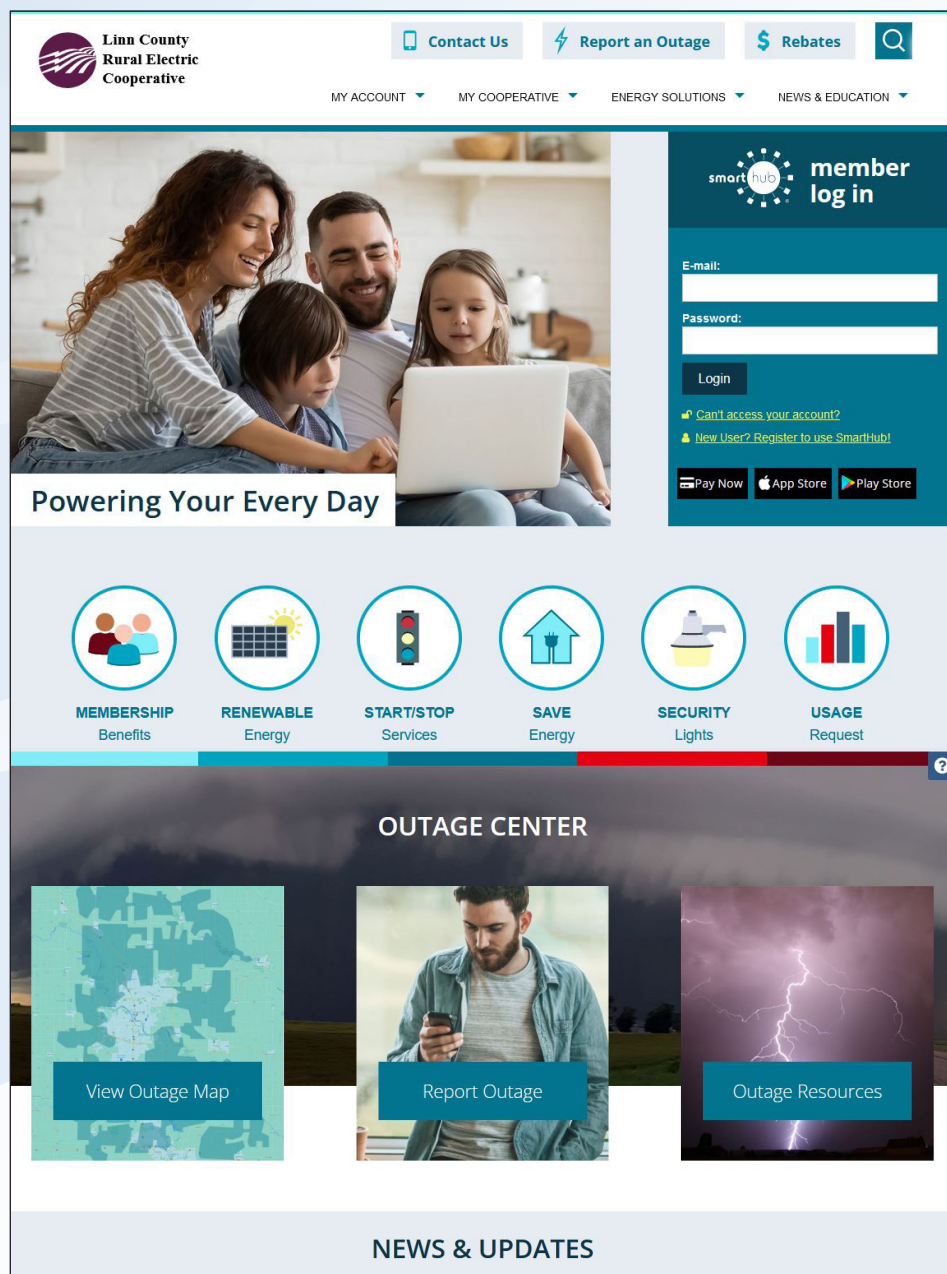
iOS

## Have You Seen It? Check Out Our New Website!

The new Linn County REC website has launched. The new site is more visual, easy to navigate and will adjust to the screen size of any device you are using to access the site.

### New features include:

- New convenient SmartHub log in feature on every page
- New quick link icons take you straight to the information you're looking for
- New easy to use online forms



LINN COUNTY RURAL ELECTRIC COOPERATIVE

# Why A Hybrid Air-Source Heat Pump Makes Sense

Since both natural gas and propane costs are increasing, it is the ideal time to consider a hybrid air-source heat pump for heating flexibility if a system replacement is needed.

An air-source heat pump looks like a traditional air conditioner that provides cooling in the summer, but in addition to cooling, it also provides heating through a reversing valve. Air-source heat pumps can be between 200% - 300% efficient, which means for every \$1.00 of energy purchased, you can receive up to \$3.00 of heat energy. A standard air-source heat pump achieves optimal efficiency between 33° - 60°, which represents 67% of our heating hours.

## Did you know that homes can have both electric and gas heating?

Air-source heat pumps can work well paired with a natural gas or propane furnace. A dual-fuel or hybrid air-source heat pump is becoming a popular technology that has the capability to perform smart switching between the air-source heat pump and gas furnace. It employs a fully optimized control technology to automatically use the most cost-effective heating mode across time. A hybrid system gives homeowners the advantage of high efficiency heat pumps during the shoulder seasons and the reliability of high AFUE gas furnaces during the peak winter heating load.

When the time comes to replace your heating and cooling system, consider upgrading an air-conditioner to an air-source heat pump for added flexibility of your system.

## Can an Air-Source Heat Pump provide higher efficiency and more heat at colder temperatures?

Cold-climate air-source heat pumps are a newer technology than a traditional air source heat pump (ccASHP) and are designed to be more efficient for heating homes in colder regions like ours. Air-source heat pump technology has improved by the addition of a variable speed (inverter driven) compressor and updates to the refrigerant, making the systems better suited for cold-climate heating. The inverter driven compressor allows the compressor speed to



### DID YOU KNOW?

**Air source heat pumps can be between 200% - 300% efficient, which means for every \$1.00 of energy purchased, you can receive up to \$3.00 of heat energy.**

modulate and increase capacity during periods of colder outdoor air temperatures, providing efficiencies of 175% or greater at 5°.

## Available Rebates

Call our Member Services department at 319-377-1587 or send an email to [rebates@linncountyrec.com](mailto:rebates@linncountyrec.com) to inquire about our rebates for 2022. Forms will be available on our website after January 1st, 2022.

## 2022 Calendars Available Now



Free 2022 calendars are available for pick up in our Marion office from 7:30 - 4:00 while quantities last.

Due to postage costs, we are unable to mail them.



### OFFICE CLOSED

Linn County REC offices will be closed December 24th, 27th and January 3rd.

Bill payment kiosks are available 24 hours a day at our Marion office and North Liberty operations center.

From our co-op family to yours, wishing you a happy holiday season and a joyous new year.



- Use only holiday lights that have been safety tested and have the UL label.
- Before using, check each strand for broken sockets, frayed cords or faulty plugs.
- Don't string together more than three standard sized incandescent sets of lights or you could overload the circuit.
- Don't throw lights over tree branches that are near power lines and service connections.
- Lighted and electrical outdoor decorations should be plugged into ground fault circuit interrupter (GFCI) protected outlets.
- Never tack or nail through a strand of lights. Do not place cords under rugs or in high traffic areas.
- Always unplug lights before leaving your home or going to bed; using a timer can help with this.

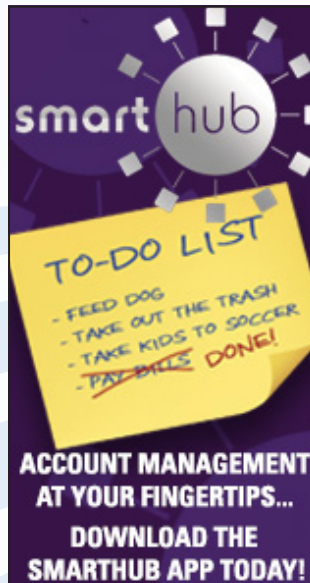
## Holiday Wassail



- 1 quart apple cider
- 2 cups grapefruit juice
- 1 - 1/2 cups orange juice
- 12 whole cloves
- 2 sticks cinnamon
- 1/2 cup Sugar (optional - depending on desired sweetness)

Combine all ingredients in a sauce pan (or crock pot) for a least 10 minutes. Serve hot.

Yield: 12 one cup servings



SmartHub has several features that make managing your account easy:

- Pay your bill
- Set up recurring payments
- View billing history/energy use
- Receive text or email alerts
- Report an outage

Sign up for SmartHub on our website at [www.linncountyrec.com](http://www.linncountyrec.com) or download the app for free in the App Store or Play Store.



LINN COUNTY RURAL ELECTRIC COOPERATIVE

[WWW.LINNCOUNTYREC.COM](http://WWW.LINNCOUNTYREC.COM)

*ElectricCONNECTION*, the official publication of Linn County Rural Electric Cooperative, is published monthly for members of Linn County Rural Electric Cooperative, 5695 REC Drive, P.O. Box 69, Marion, Iowa 52302. © Copyright 2021  
This institution is an equal opportunity provider and employer.

